



GAT MONTHLY MEMBERSHIP PROGRESS REPORT

Results as of: 5/31/2023

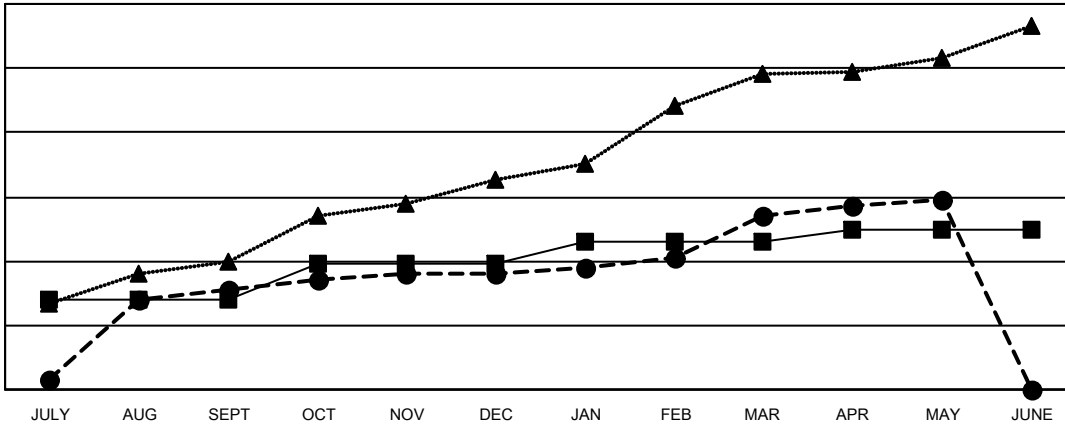
Multiple District 320

LOCATION: INDIA

Clubs			
RESULTS FOR 2022-2023			
QUARTER	NEW CLUB GOAL	NEW CLUBS	DROPPED CLUBS
JULY/AUG/SEPT	28	31	32
OCT/NOV/DEC	11	5	35
JAN/FEB/MAR	7	18	13
APR/MAY/JUNE	4	5	3

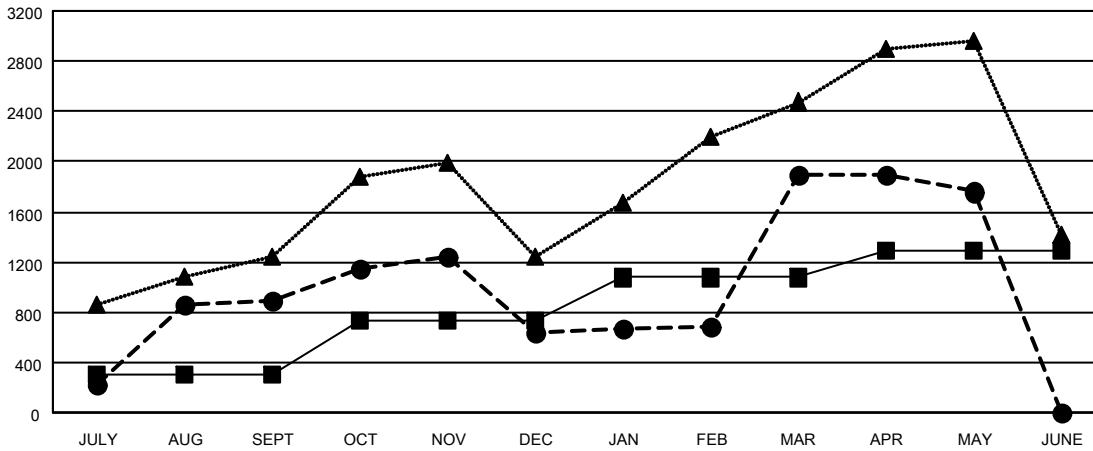
Members			
RESULTS FOR 2022-2023			
QUARTER	MEMBER GROWTH NET GOAL	MEMBER GROWTH ACTUAL	DROPPED MEMBERS ACTUAL (including transfers)
JULY/AUG/SEPT	305	1,607	608
OCT/NOV/DEC	430	1,179	1,387
JAN/FEB/MAR	340	1,720	330
APR/MAY/JUNE	210	375	456

GOALS AND ACTUAL NEW CLUBS CUMULATIVE



- - CURRENT YEAR GOALS FOR NEW CLUBS
- - CURRENT YEAR ACTUAL NEW CLUBS
- ▲ - LAST YEAR ACTUAL NEW CLUBS

GOALS AND ACTUAL MEMBERS CUMULATIVE



- - MEMBER GROWTH NET GOAL
- - MEMBER GROWTH ACTUAL
- ▲ - LAST YEAR MEMBERSHIP ACTUAL

DROPPED CLUBS: 82	
DROPPED MEMBERS	
DECEASED	57
CLUB CANCELLED	591
OTHER	2,133
TOTAL	2,781

450 CLUBS OF 703 ADDED 1 OR MORE NEW MEMBERS

[CLICK HERE FOR CUMULATIVE MEMBERSHIP DATA](#)

GENDER DISTRIBUTION	
MALE	16,527 (72.28%)
FEMALE	6,333 (27.70%)
NON BINARY	1 (0.00%)
PREFER NOT TO ANSWER	5 (0.02%)
TOTAL FAMILY UNIT MEMBERS	12,165
FAMILY MEMBERS PAYING HALF DUES	7,135